



BRANCH MANAGER ATTACHMENTS



53 " Bypass Mini Grapple

Distributed by



Top Notch Equipment, Inc.

www.topnotchequipment.com

www.branchmanagerattachments.com

INTRODUCTION

Branch Manager Attachments would like you to be completely satisfied with your new product, so please contact us for help with service, replacement parts, or other information you require.

Before contacting TNE please know your products model and serial number so we may provide you with the most accurate information.

For your convenience, please write the model and serial number in the space provided below.

| |
|---------------------|
| Model No: _____ |
| Serial No: _____ |

The warning system in this manual identifies potential hazards and has special safety messages that help you and other avoid personal injury or death. DANGER, WARNING and CAUTION are signal words used to identify the level of hazard. Regardless of the hazard please be careful.

DANGER signals an extreme hazard that will cause serious injury or death.

WARNING signals a hazard that may cause serious injury or death.

CAUTION signals a hazard that may cause minor or moderate injury.

Please also pay attention to words that highlight special information. “Note” and “Important” mark information that is worthy of special attention.

CONTENTS

| | |
|-------------------------------|---|
| Safety..... | 3 |
| Safe Operating Practices..... | 3 |
| Service..... | 4 |
| Decal information | 4 |
| Grease Zerk Locations | 4 |
| Service Parts list | 5 |
| Parts list Diagram | 6 |
| Features | 7 |



SAFETY

Improper use or maintenance by the operator or owner can result in injury. To reduce the potential for injury, comply with these safety instructions and always pay attention to the safety alert symbol. Failure to follow safety instructions may result in injury or death.

SAFE OPERATING PRACTICES

This product is capable of amputating limbs and phalanges. Always follow manufacturer's safety instructions to avoid serious injury or death.

General Operation

Allow only responsible adults who are familiar with the instructions to operate the machine.

Be sure the area is clear of people before operating, stop operation if someone should enter.

Keep body parts away from moving parts while machine is in operation.

Do not exceed 200 lbs while using the rope bollard.

Ensure the locking pins are engaged on the receiver plate before using the machine.

Never operate this machine under the influence of alcohol or drugs that may impair your ability to safely operate machinery.

Service

Note: Your Branch Manager Mini Grapple clevis nut will be extra tight from the factory, it will rotate more freely with use.

- 1 Keep nuts and bolts tight. Keep equipment in good condition
- 2 Grease joints that have zerk fittings each day or before each use.
- 3 Inspect hydraulic hoses and fittings for leaks before operation.
- 4 Keep body and hands away from pin-hole leaks or nozzles that eject high pressure hydraulic fluid. Use cardboard or paper to find hydraulic leaks. Hydraulic fluid escaping under pressure can penetrate skin and cause injury. Fluid accidentally injected into the skin must be surgically removed within a few hours by a doctor familiar with this form of injury or gangrene may result.

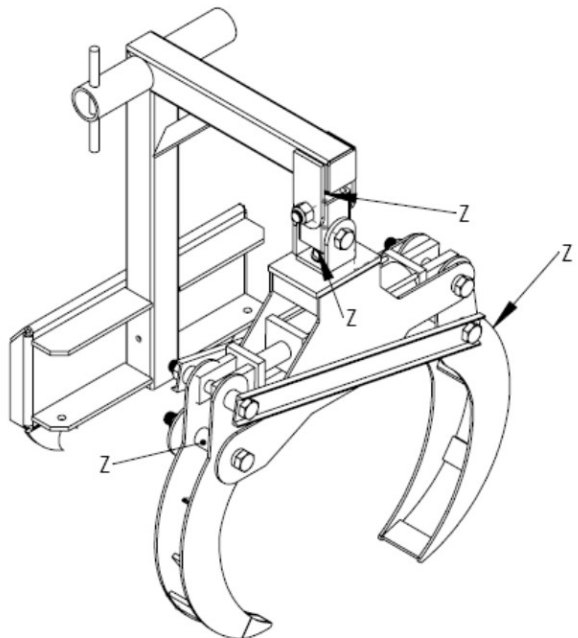
Safety Decals and instructions are easily visible to the operator and are located near any area of potential danger. Replace any decals that are damaged or lost.

DANGER PINCH POINT

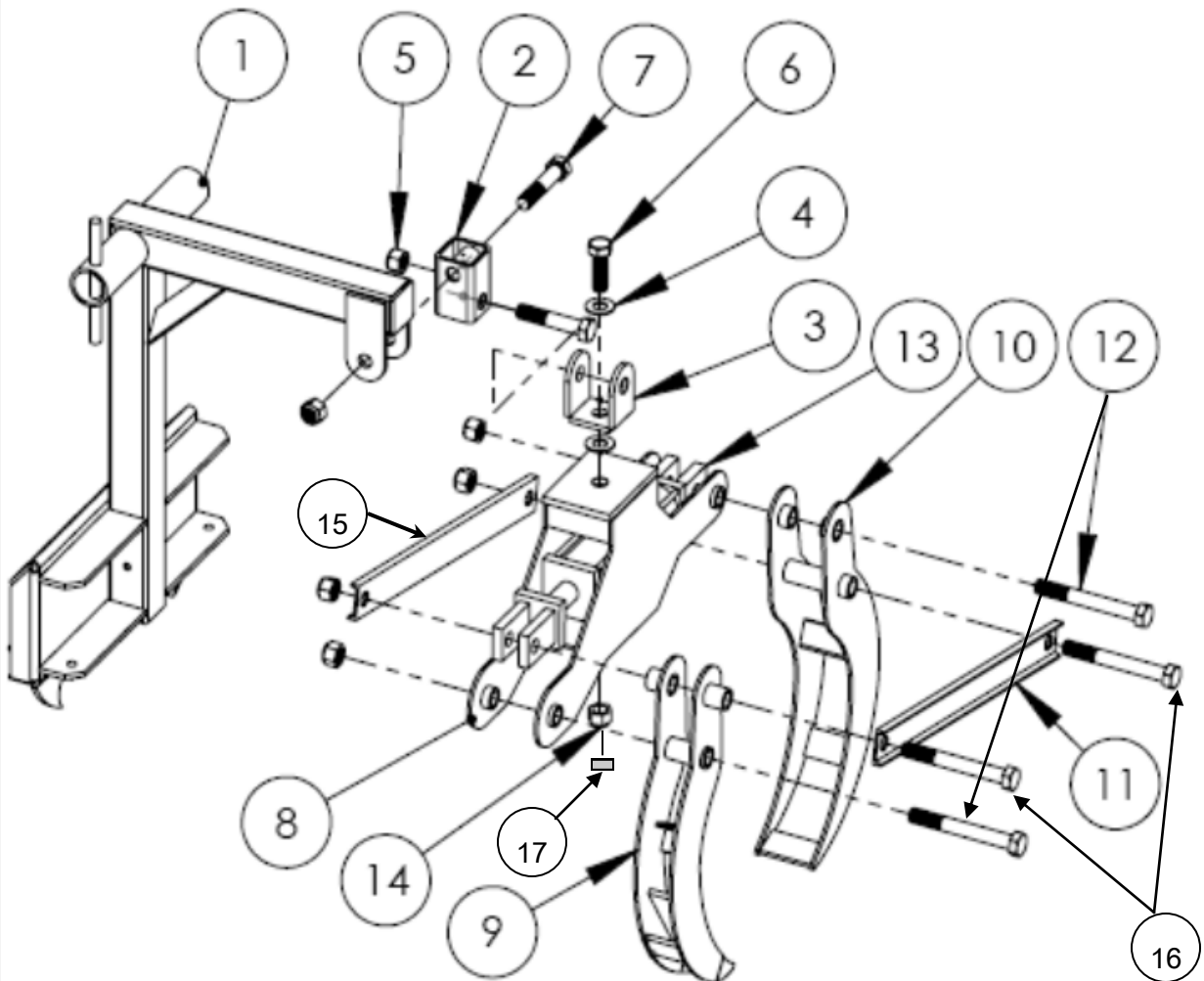
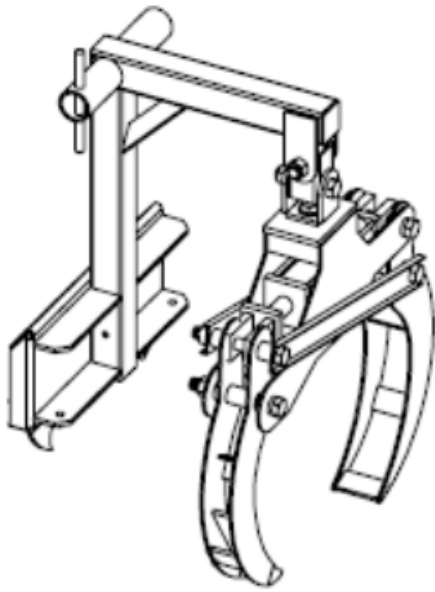
Decal located on the side of grapple body



Grease Zerk Location



| ITEM # | PART NUMBER | DESCRIPTION | QTY. |
|-------------------------|--------------|---|------|
| UNIVERSALGRAPPLE HANGER | | | |
| 1 | B100000U | Add-b MT mini /Gehl140, or ,-A Avant, -PT asv30 | 1 |
| 2 | B420006 | KNUCKLE | 1 |
| 3 | B420005 | CLEVIS | 1 |
| 4 | B100006 | 1" WASHER USS Gr8 | 3 |
| 5 | B100004 | 1" TOP LOCK NUT | 6 |
| 6 | B100003 | HHCS 1X3 | 1 |
| 7 | B100002 | HHCS 1X5 | 2 |
| 8 | B420103 | GRAPPLE BODY | 1 |
| 9 | B420101 | GRAPPLE ARM SMALL | 1 |
| 10 | B420102 | GRAPPLE ARM LARGE | 1 |
| 11 | B420104R | RIGHT TRANSFER ARM | 2 |
| 12 | B100001-7 | HHCS 1X7 Gr5 | 2 |
| 13 | B170002 | CYLINDER 2X8 | 1 |
| 14 | B100005 | 1 " FLEXLOC NUT | 1 |
| 15 | B420104L | LEFT TRANSFER ARM | 1 |
| 16 | B100001 | HHCS 1X8 Gr5 | 2 |
| 17 | B100005-J | 1 " JAM NUT | 1 |
| *** NOT PICTURED *** | | | |
| 18 | B170047 | 108" - 1/2 " HOSE | 2 |
| 19 | B170022 | 8MJ - 8MB 90 FITTING | 2 |
| 20 | B170004 | MALE HYD COUPLER | 1 |
| 21 | B170005 | FEMALE HYD COUPLER | 2 |
| 22 | B150089 | SPIRAL HOSE WRAP Y40MM | 4 |
| 24 | 160002 | PINCH STICKER | 1 |
| 25 | 160003 | BRANCH MANAGER STICKER | 1 |
| 26 | 150037 | ZERK FITTING 45 DEG | 2 |
| 27 | RECEIVER | RECEIVER HITCH | 1 |
| 28 | Receiver Pin | Receiver Hitch Snapper pin | 1 |



EXERCISE COMMON SENSE

WHILE USING THESE UNIQUE BRANCH MANAGER FEATURES

Rope Bollard **DANGER**

Rated for 200 lbs. Never exceed
your machines operating Capacity
DON 'T BE STUPID



Saw Scabbards

Only meant for transport
NEVER use while dragging
Brush and logs



Tree Pusher **DANGER**

Never exceed your machines
operating Capacity
DON 'T BE STUPID



Log Dogs **WARNING**

Never exceed your machines
operating Capacity



Receiver Hitch **DANGER**

Never exceed your machines operating Capacity. Round stock inserts into the
bottom of Grapple Hanger—Pin it In. Hook trailer safety chain to grab slot

DO NOT USE ON INCLINES and HILLS, DON 'T BE STUPID



Machine Service Log

Date: _ _ _ _ _

Service Description

Date: _ _ _ _ _

Service Description

Date: _ _ _ _ _

Service Description

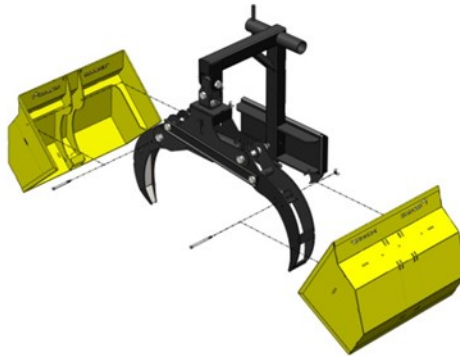
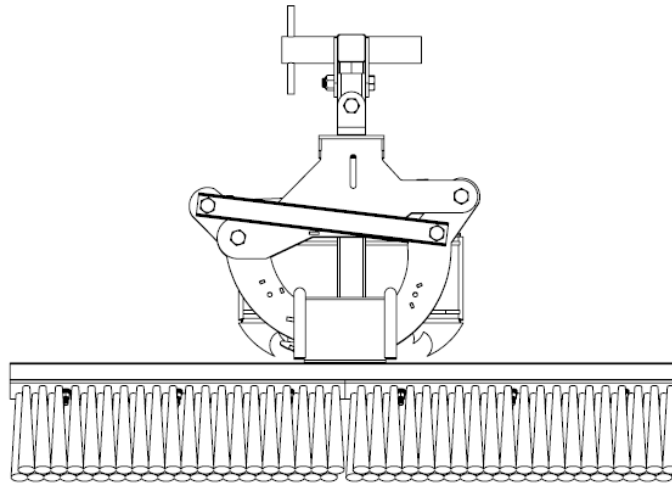
Date: _ _ _ _ _

Service Description

Date: _ _ _ _ _

Service Description

Your Branch Manager Mini Grapple is compatible
with the Branch Manager Rake and Branch Manager Mini Grapple Scoops!



Videos

Search youtube branch manager rake and scoops
You will see more Branch manager products there also

Check out all of our attachments for all sizes of skid steers and
articulating loaders on our Branch Manager YouTube Channel.

Branch Manager LLC Plymouth, MN

763-398-0079 Info@topnotchequipment.com